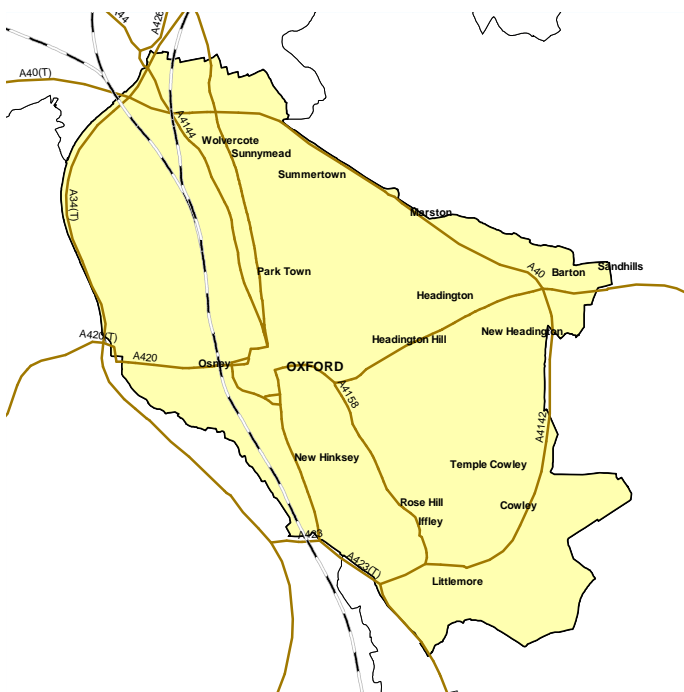


Oxford

This profile gives a snapshot of health in your area. With other local information, this Health Profile has been designed to support action by local government and primary care trusts to tackle health inequalities and improve people's health.

Health Profiles are funded by the Department of Health and produced annually by the Association of Public Health Observatories.

To view Health Profiles for other local authorities and to find out how they were produced, visit www.healthprofiles.info



POPULATION 149,000

Based on Ordnance Survey material. © Crown Copyright. All rights reserved. DH 100020290 2008. Other map data © Collins Bartholomew.



Oxford at a glance

- Indicators of health for people living in Oxford are mixed when compared with the England average. Levels of deprivation are low. However, violent crime rates are high.
- Over 5,300 children are living in poverty. GCSE achievement is worse than the England average. The teenage pregnancy rate is high. Children have low rates of physical activity.
- There are health inequalities in Oxford by location, gender, and ethnicity. Barton, Blackbird Leys and Northfield Brook wards are in the most deprived fifth of areas nationally. Men and women from the least deprived areas can expect to live 5 years longer than those in the most deprived areas.
- Deaths from all causes have fallen over the last ten years for men and women and are similar to the England average. Early deaths from cancer and from heart disease and stroke have decreased and reflect the England average. Smoking accounts for 172 deaths each year.
- Estimated numbers of adults who binge drink (1 in 5) and hospital stays related to alcohol all appear worse in Oxford than the England average.
- The Oxfordshire Local Area Agreement for the next 3 years has prioritised: childhood obesity, effective treatment for drug users, teenage pregnancy, carers and all causes of mortality.
- Further information is in the Director of Public Health's annual report at www.oxfordshirepct.nhs.uk

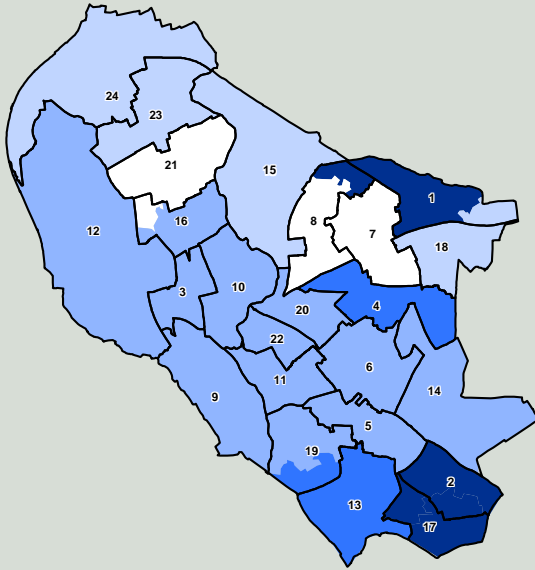


Deprivation: a national perspective

This map shows differences in deprivation between small areas in this local authority, compared to the whole of England (based on IMD 2007).

National deprivation groups

- 1 Least deprived fifth of areas in England
- 2
- 3
- 4
- 5 Most deprived fifth of areas in England



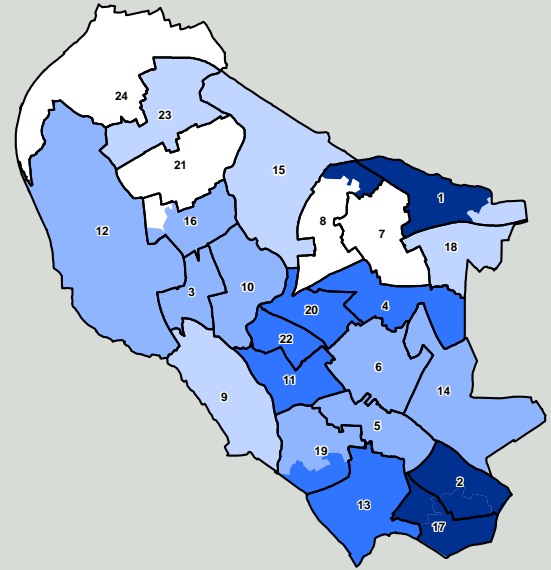
Based on Ordnance Survey material. © Crown Copyright. All rights reserved. DH 100020290 2008

Deprivation: a local perspective

This map shows differences in deprivation between small areas in this local authority, compared to the local authority as a whole (based on IMD 2007).

Local deprivation groups

- 1 Least deprived fifth in this local authority
- 2
- 3
- 4
- 5 Most deprived fifth in this local authority



Based on Ordnance Survey material. © Crown Copyright. All rights reserved. DH 100020290 2008

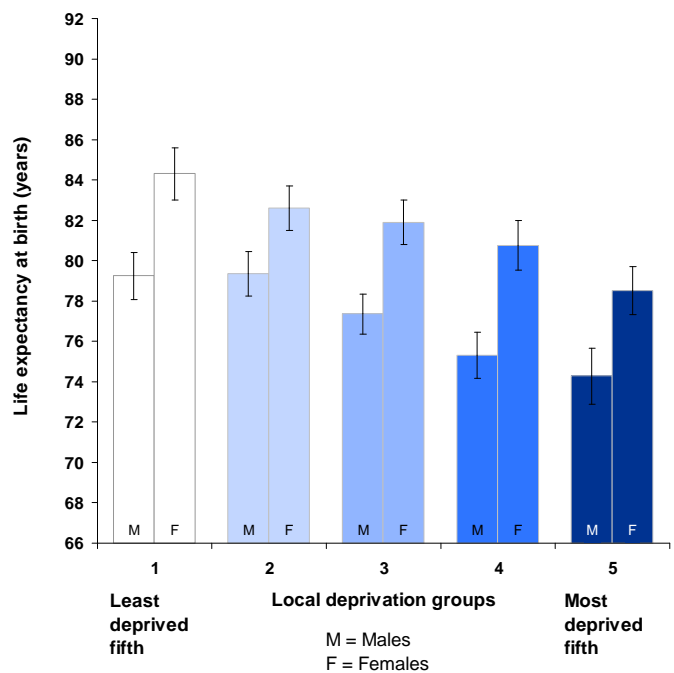
Ward legend

- 1 Barton and Sandhills
- 2 Blackbird Leys
- 3 Carfax
- 4 Churchill
- 5 Cowley
- 6 Cowley Marsh
- 7 Headington
- 8 Headington Hill and Northway
- 9 Hinksey Park
- 10 Holywell
- 11 Iffley Fields
- 12 Jericho and Osney
- 13 Littlemore
- 14 Lye Valley
- 15 Marston
- 16 North
- 17 Northfield Brook
- 18 Quarry and Risinghurst
- 19 Rose Hill and Iffley
- 20 St Clement's
- 21 St Margaret's
- 22 St Mary's
- 23 Summertown
- 24 Wolvercote

Ward boundaries 2005 are superimposed upon MSA (Middle Super Output Area) boundaries. Each MSA is shaded by Index of Multiple Deprivation (IMD) 2007. For details refer to www.communities.gov.uk. Numbers correspond to ward legend. Ward boundaries may have changed.

Health inequalities: a local perspective

Inequalities in life expectancy (2002-2006) for men and women who live in areas with different levels of deprivation (within this local authority).



95% confidence interval. These indicate the level of uncertainty about each value on the graph. Longer/wider intervals mean more uncertainty. When two intervals do not overlap it is reasonably certain that the two groups are truly different.

Health inequalities: changes over time

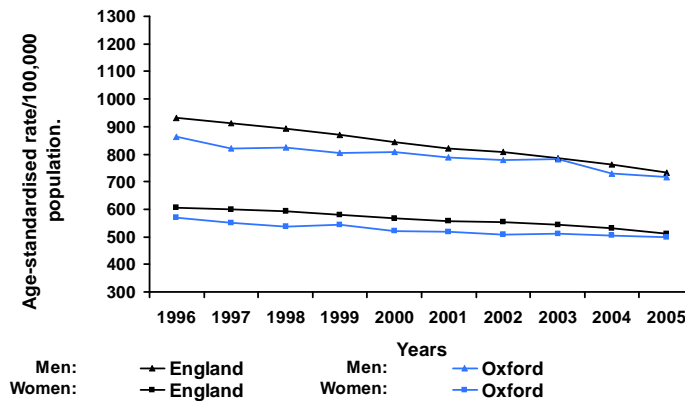
These trend graphs show how changes in health for this local authority compare with changes for the whole of England. Data points are mid-points of 3 year moving averages of annual rates i.e. 1996 represents the 3 year period 1995-97.

Trend 1 compares death rates (at all ages and from all causes) in this local authority with those for England.

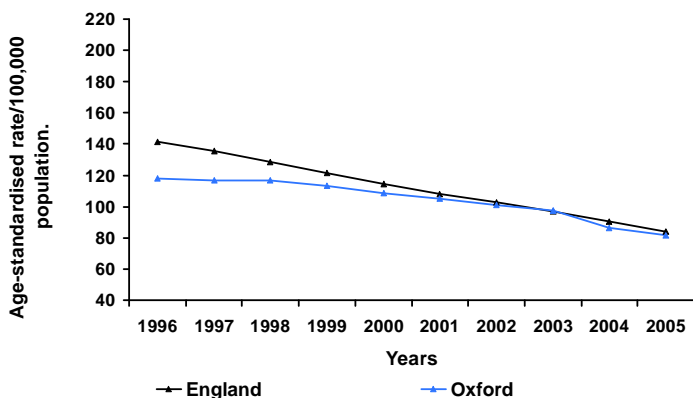
Trend 2 compares rates of early death from heart disease and stroke (in people under 75) in this local authority with those for England.

Trend 3 compares rates of early death from cancer (in people under 75) in this local authority with those for England.

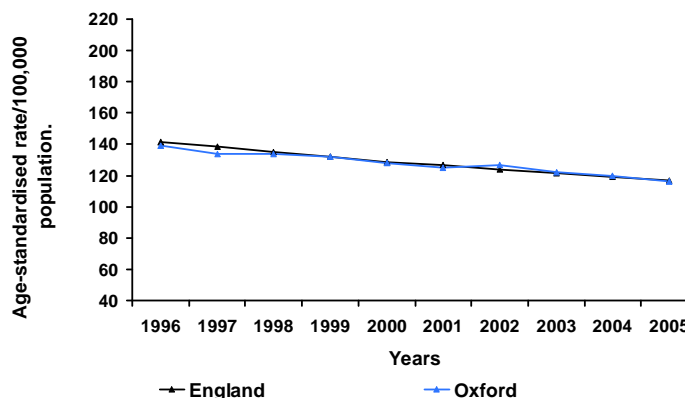
Trend 1: All age, all cause mortality



Trend 2: Early death rates from heart disease and stroke



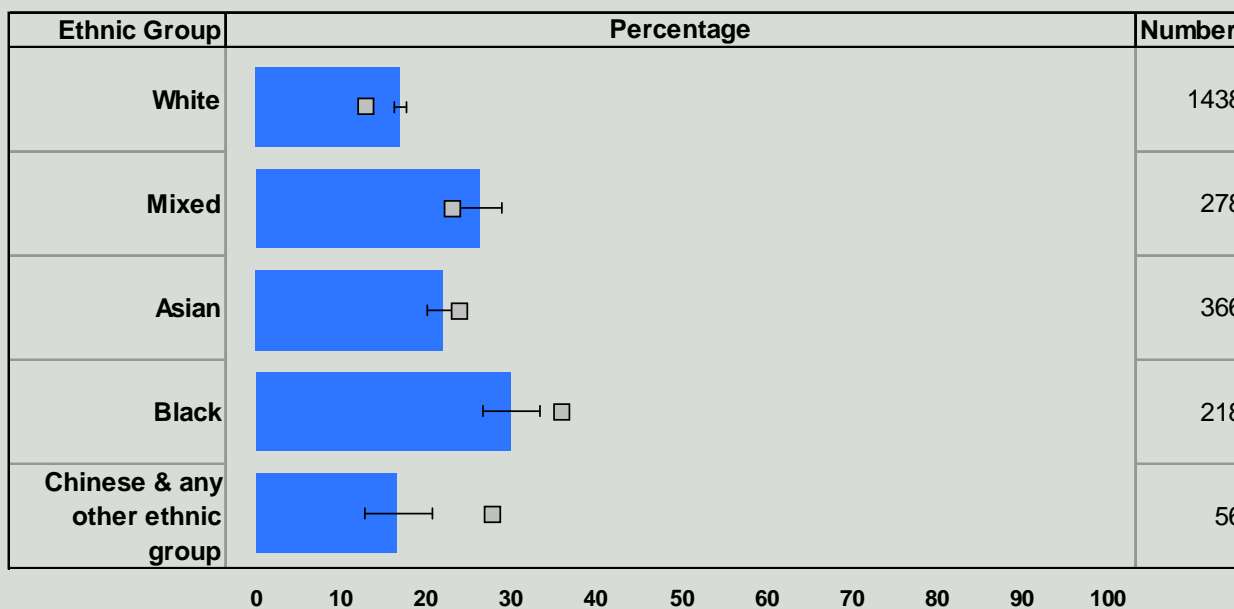
Trend 3: Early death rates from cancer



Health inequalities: ethnicity

This chart compares the percentage of children in each ethnic group who are eligible for free school meals (2007). Eligibility for free school meals is an indicator of deprivation, and people who suffer more deprivation tend to have poorer health. Comparing deprivation by ethnic group helps identify potential health inequalities between groups.

Percentage and number of children eligible for free school meals



Where the total school population in an ethnic group in the local authority is less than 30, no data have been presented and the number column shows n/a. Where the number is less than 5, no percentage is shown.

□ England - average
■ Oxford

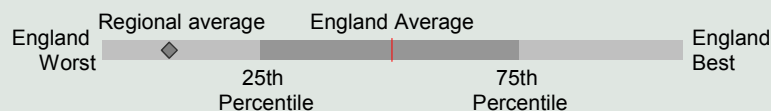
Confidence intervals are shown for local data

Health summary for Oxford

The chart below shows how people's health in this local authority compares to the rest of England. The local result for each indicator is shown as a circle, against the range of results for England which is shown as a bar. A green circle may still indicate an important public health problem.

- Significantly worse than England average
- Not significantly different from England average
- Significantly better than England average
- No significance can be calculated

* relates to National Indicator 2007



Domain	Indicator	Local No. Per Year	Local Value	Eng Avg	Eng Worst	England Range	Eng Best
Our communities	1 Deprivation	16455	11.1	19.9	89.2	[Bar chart showing local result as a green circle]	0.0
	2 Children in poverty *	5369	24.0	22.4	66.5	[Bar chart showing local result as a red circle]	6.0
	3 Statutory homelessness	379	6.8	4.4	14.4	[Bar chart showing local result as a red circle]	0.0
	4 GCSE achievement (5 A*-C) *	461	43.9	60.1	35.8	[Bar chart showing local result as a red circle]	82.7
	5 Violent crime	4228	28.2	19.3	38.9	[Bar chart showing local result as a red circle]	4.5
	6 Carbon emissions *	1121	8.4	7.6	20.6	[Bar chart showing local result as a white circle]	4.6
Children and young people's health	7 Smoking in pregnancy	202	11.0	16.1	38.8	[Bar chart showing local result as a green circle]	4.4
	8 Breast feeding initiation *	1424	77.4	69.2	33.2	[Bar chart showing local result as a green circle]	90.9
	9 Physically active children *	8910	72.9	85.7	63.3	[Bar chart showing local result as a red circle]	99.2
	10 Obese children *	82	8.7	9.9	16.1	[Bar chart showing local result as a yellow circle]	4.9
	11 Children's tooth decay (at age 5)	n/a	1.3	1.5	3.2	[Bar chart showing local result as a yellow circle]	0.4
	12 Teenage pregnancy (under 18) *	107	45.8	41.1	83.1	[Bar chart showing local result as a red circle]	12.5
Adults' health and lifestyle	13 Adults who smoke *	n/a	24.3	24.1	40.9	[Bar chart showing local result as a yellow circle]	13.7
	14 Binge drinking adults	n/a	21.5	18.0	28.9	[Bar chart showing local result as a red circle]	9.7
	15 Healthy eating adults	n/a	37.6	26.3	14.2	[Bar chart showing local result as a green circle]	45.8
	16 Physically active adults	n/a	11.4	11.6	7.5	[Bar chart showing local result as a yellow circle]	17.2
	17 Obese adults	n/a	20.0	23.6	31.2	[Bar chart showing local result as a green circle]	11.9
Disease and poor health	18 Under-15s 'not in good health'	182	9.4	11.6	20.8	[Bar chart showing local result as a green circle]	6.4
	19 Incapacity benefits for mental illness *	2410	22.5	27.5	68.6	[Bar chart showing local result as a green circle]	8.4
	20 Hospital stays related to alcohol *	422	306.9	260.3	741.1	[Bar chart showing local result as a red circle]	87.6
	21 Drug misuse	719	6.7	9.9	34.9	[Bar chart showing local result as a white circle]	1.3
	22 People diagnosed with diabetes	4369	2.9	3.7	5.9	[Bar chart showing local result as a green circle]	2.1
	23 Sexually transmitted infections					[Bar chart showing local result as a white circle]	
	24 New cases of tuberculosis	37	25.0	15.0	102.0	[Bar chart showing local result as a red circle]	0.0
	25 Hip fracture in over-65s	106	462.1	479.8	699.8	[Bar chart showing local result as a yellow circle]	219.0
Life expectancy and causes of death	26 Life expectancy - male *	n/a	77.6	77.3	73.0	[Bar chart showing local result as a yellow circle]	83.1
	27 Life expectancy - female *	n/a	81.9	81.6	78.3	[Bar chart showing local result as a yellow circle]	87.2
	28 Infant deaths	7	4.1	5.0	10.3	[Bar chart showing local result as a yellow circle]	0.0
	29 Deaths from smoking	172	214.2	225.4	355.0	[Bar chart showing local result as a yellow circle]	139.4
	30 Early deaths: heart disease & stroke *	87	81.7	84.2	142.4	[Bar chart showing local result as a yellow circle]	39.7
	31 Early deaths: cancer *	122	116.4	117.1	167.8	[Bar chart showing local result as a yellow circle]	76.7
	32 Road injuries and deaths *	62	41.7	56.3	194.6	[Bar chart showing local result as a green circle]	20.8

Note (numbers in bold refer to the above indicators)

1 % of people in this area living in 20% most deprived areas of England 2005 2 % of children living in families receiving means-tested benefits 2005 3 Crude rate per 1,000 households 2005-2006 4 % at Key Stage 4 2006-2007 5 Recorded violence against the person crimes (crude rate per 1,000 population) 2006-2007 6 Total end user CO2 emissions per capita (tonnes CO2 per resident) 2005 7 % of mothers smoking in pregnancy where status is known 2006-2007 8 % of mothers initiating breast feeding where status known 2006-2007 9 % 5-16 year olds who spend at least 2 hrs/wk on high quality PE and school sport 2006-2007 10 % Schoolchildren in Reception year. 2006-2007 11 Average (mean) number of teeth per child which were actively decayed, filled, or had been extracted (age 5) 2005-2006 12 Under-18 conception rate per 1,000 females (crude rate) 2004-2006 (provisional) 13 % Modelled estimate from Health Survey for England. 2003-2005 14 % Modelled estimate from Health Survey for England. 2003-2005 15 % Modelled estimate from Health Survey for England. 2003-2005 16 % aged 16+ 2005/06 17 % Modelled estimate from Health Survey for England. 2003-2005 18 % who self assessed general health as 'not good' (directly age standardised) 2001 19 Crude rate per 1,000 working age population. 2006 20 Directly age and sex standardised rate per 100,000 pop. 2006-2007 21 Crude rate per 1000 population aged 15-64. No significance calculated for lower tier authorities. 2004-2005 22 % of people on GP registers with a recorded diagnosis of diabetes. 2005-2006 23 Indicator blank as data not yet available for local authorities. 24 Per 100,000 population (3-year average crude rate) 2004-2006 25 Directly age-standardised rate for emergency admission 2006/07 26 At birth, years 2004-2006 27 At birth, years 2004-2006 28 Rate /1,000 live births 2004-06 29 Per 100,000 population age 35+, directly age standardised rate. 2004-2006 30 Directly age standardised rate/100,000 pop. under 75 2004-2006 31 Directly age standardised rate/100,000 pop. under 75 2004-2006 32 Per 100,000 population (3-year average crude rate) 2004-2006

For more information from your regional PHO, visit www.apho.org.uk

You may use this profile for non-commercial purposes provided the source is acknowledged. 'Source: APHO and Department of Health. © Crown Copyright 2008.'